

AI Based Non Contact Thermal Scanner Connected with Cloud Platform

SmartX HUB[®]

**4-in-1 Contactless Employee Safety,
Access Control, Time & Attendance Dashboard, and
Capacity Management Solution**

✔ Quick Face Recognition

Adopts Artificial Intelligence algorithm. Matching capabilities: 1:1 and embedded 1:N (up to 25K)

✔ Accurate Temperature Measurement

Infrared thermal imaging temperature measurement technology

✔ Face Mask Compliance

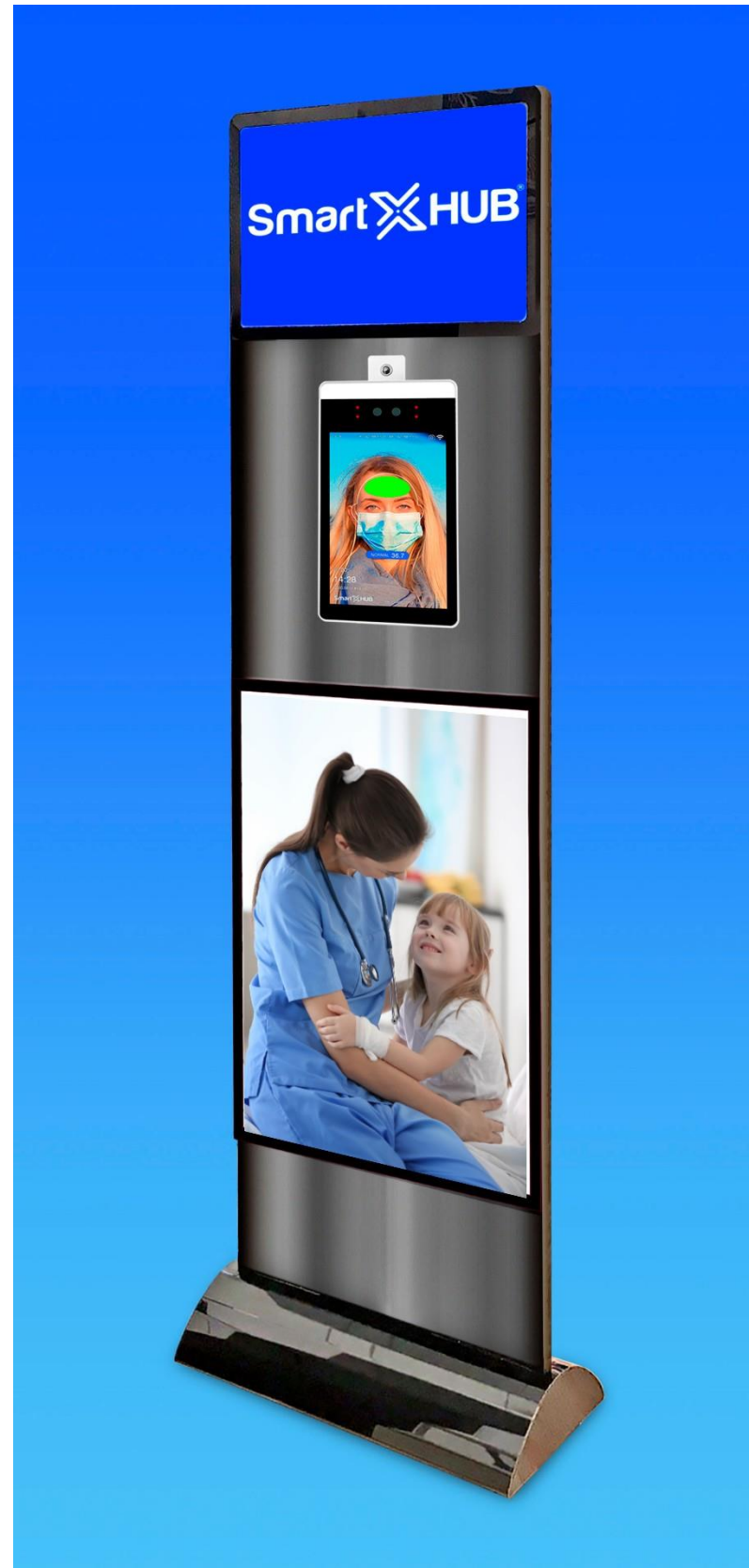
Inbuilt mask recognition algorithm

✔ Cloud & Mobile Connected

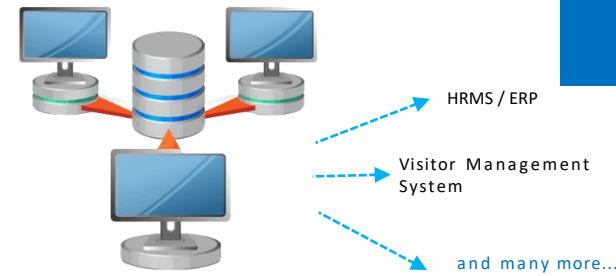
Real-time multi-site customized dashboards

✔ Compliance Metrics & Reports

On-the-go configurable alerts using E-mail, SMS and message

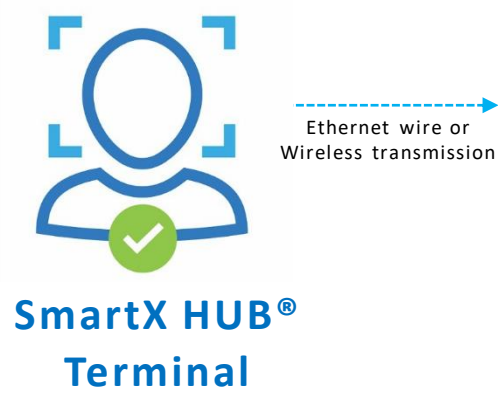


SmartX HUB® architecture



Seamlessly integrate your existing systems with an open architecture, web-service with generic API

- Face recognition for access control
- Temperature Detection < 3 seconds
- Face mask wearing compliance



- Processing data in real time
- Robust and Secure cloud technology with over 250+ deployments
- Settings and operational parameters are fully configurable
- Cloud data storage



Smartx HUB® Dashboard

- Web based dashboard for centralized monitoring
- Accessible from PC, tablet or smartphone
- Real time alerts and alarms
- Flexibly designed reports
- Export data to PDF, CSV, Excel

The **SmartX HUB® Suite** is an **integrated, cloud based solution**, ideal for managing all the aspects linked with visitors access, staff working hours and safety.

It includes staff attendance and absence management, access control, production data collection and shift management. It is an **AIoT - Artificial Intelligence & Internet of Things innovative** offer, aimed at mobile collaborators too, that can be accessed by any authorized user from anywhere.

SmartX HUB[®] is much more than your regular Access Control System



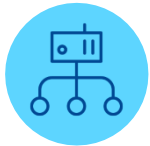
Remote Device Configurability

- Add, edit or remove an employee from database
- Upload visitors & employee database in bulk
- Store employee details across devices with a single click
- Change device settings remotely from the SmartX HUB[®] Platform
- Guaranteed facial image capture for a wide range of user profiles
- Human-sounding voice prompt



Easily Accessible Reports On-the-Go

- Attendance report with temperature logs & Analytics Dashboard
- Traffic Report - event logs for registered/unregistered visitor
- Maintain records of check-in/check-off employees
- Contact Trace - know who has been where to help mitigate exposure and notify individuals
- Path Tracking
- Capacity Management -set the maximum number of allowable people in an area, and the system automatically monitors the attendance in real-time
- Location Activity Dashboard

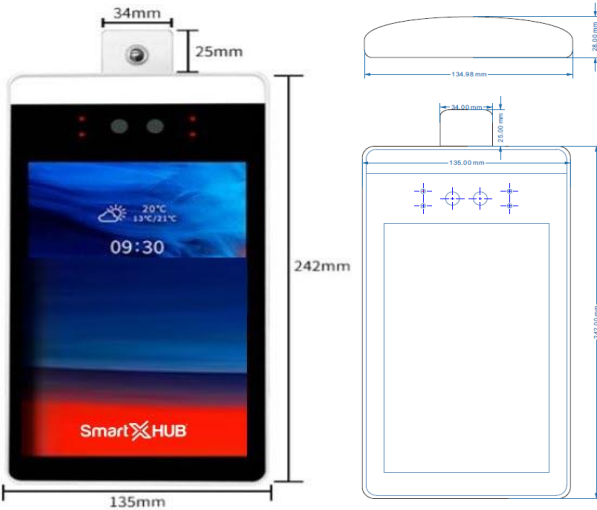


Smooth Integration With Your Existing Systems Through API

- HRMS & Payroll System
- Security System
- Visitor Management System
- Production System
- and many more...



Hardware Specifications



Model Number	SMTXTAB001
HARDWARE	
CPU	Mstar SSC337DE
Operation system	Embedded LINUX
Panel	8"HD, Resolution 800*1280
Speaker	Built-in stereo speakers
RAM	8G
Protection level	IP65
FACE RECOGNITION	
Face recognition height	3.94-7.22Ft (1.2-2.2 meters)
Face recognition distance	1.64-16.4Ft (0.5-5 meters)
Face posture	vertical viewing 30°, horizontal viewing 30°
Response speed	≤0.3ms
Face database capacity	Maximum 30,000 faces
Local storage	2 million records storage capacity
Recognition mode	Face 1:N
Recognition rate	99.9%, 95% (with facemask)
BODY TEMPERATURE DETECTION	
Temperature measurement technology	Infrared thermal imaging
Temperature measurement mode	TPA 16x16C Area array temperature measurement
Temperature measurement accuracy	± (.54°F) 0.3°C
Temperature measuring range	96.4°~119.7° F (35.8°~48.7°C) Indoor
Temperature measurement response	2s
Temperature measuring distance	1.64-2.46Ft (0.3-0.75 meters)

Three installation methods:

Desktop Installation

Floor Support Installation

Wall-mounted



SCAN ME

For more details , reach out to us @
www.smartxhub.ai | info@smartxhub.ai